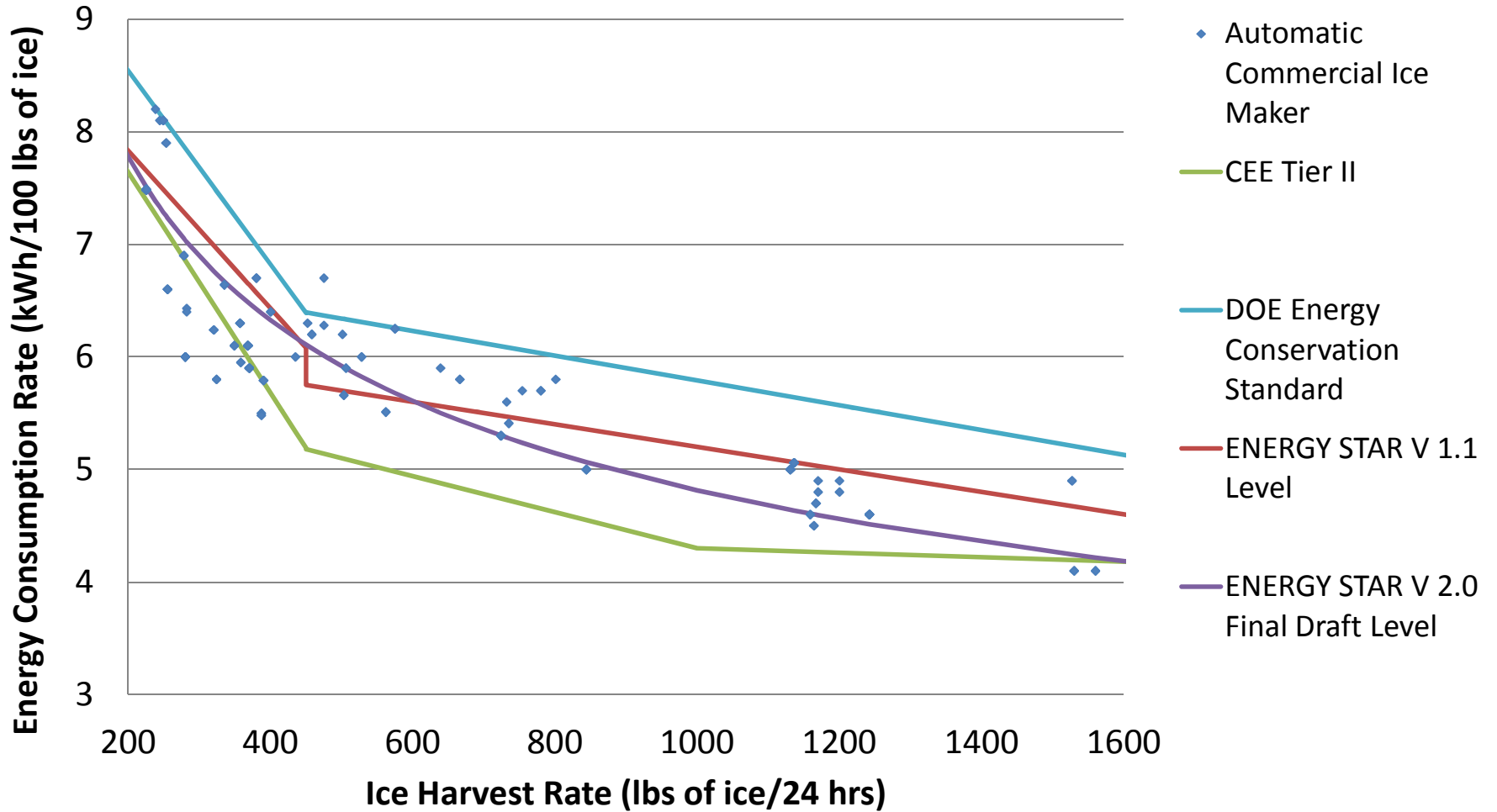
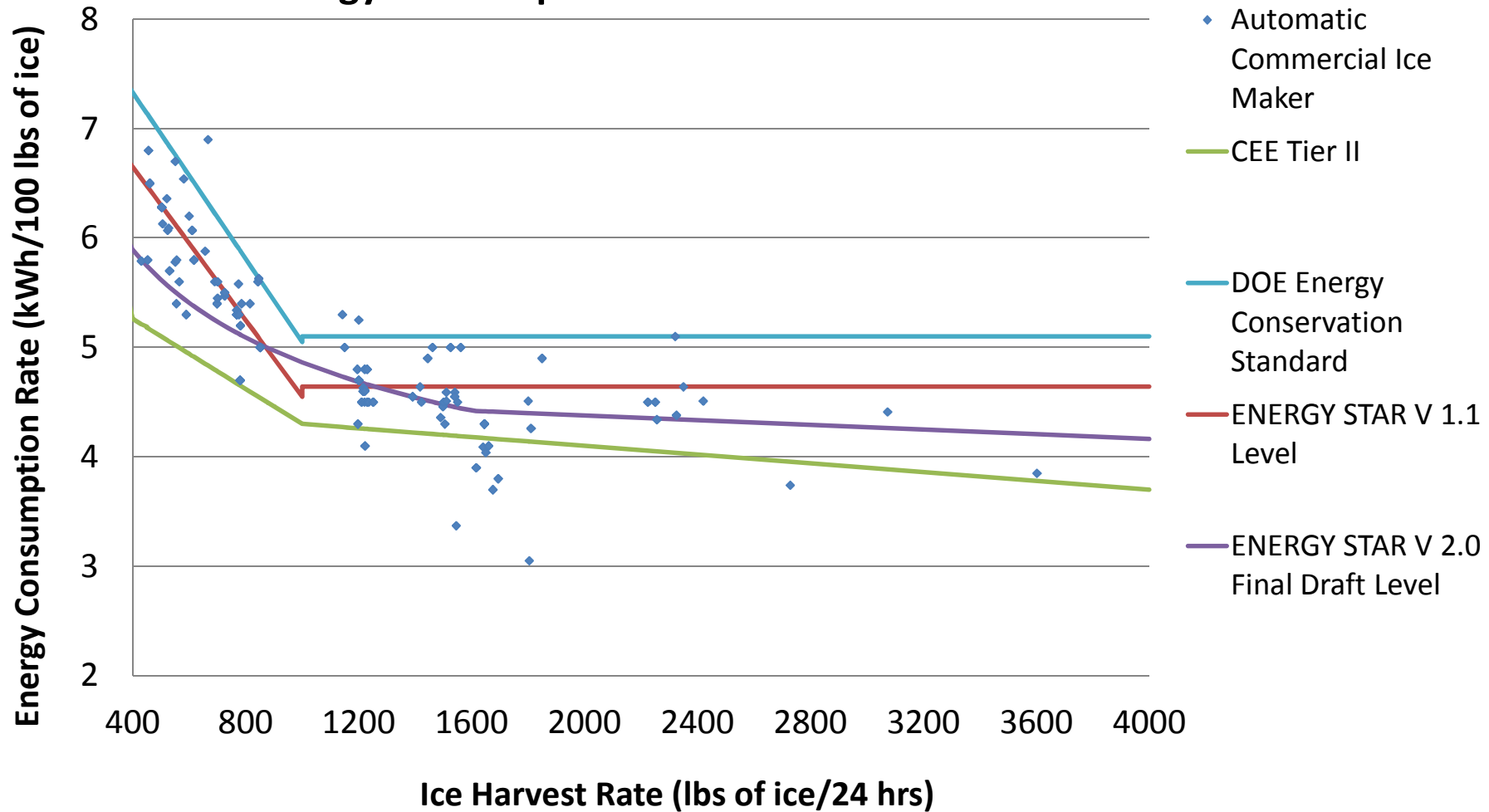


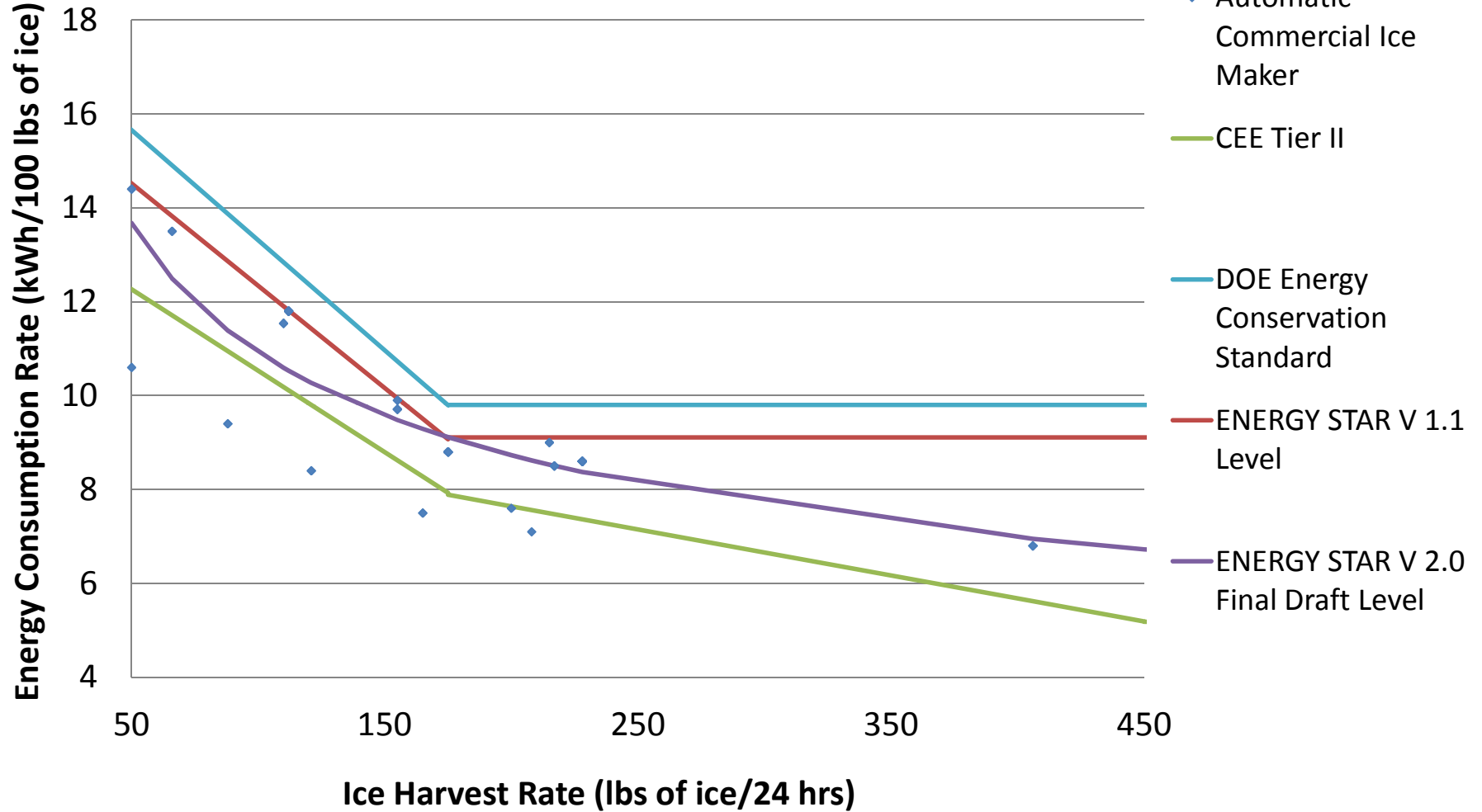
# Final Draft - IMH Batch Type Air-Cooled Automatic Commercial Ice Maker Energy Consumption Rate vs Ice Harvest Rate



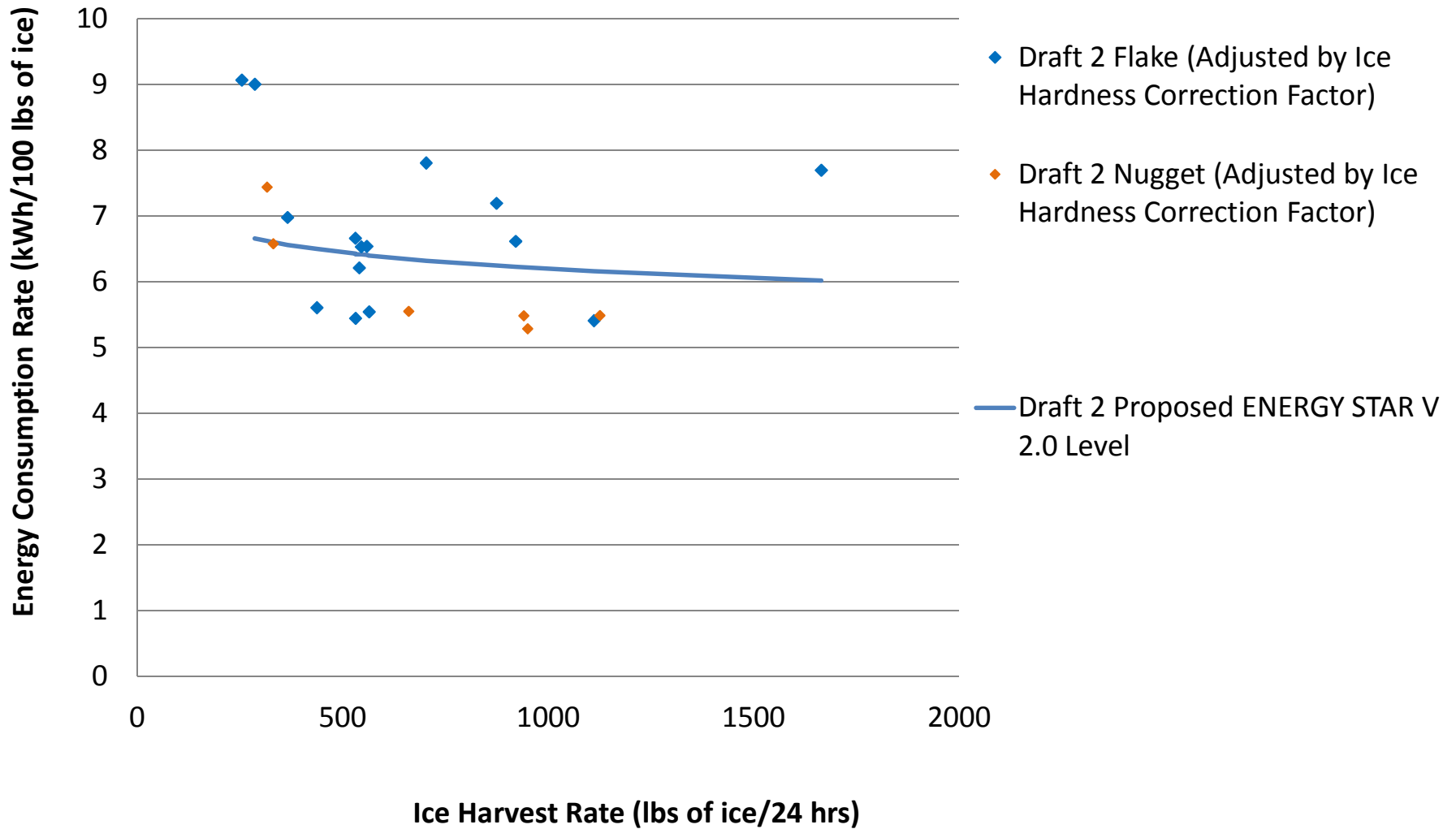
# Final Draft - RCU Batch Type Air-Cooled Automatic Commercial Ice Maker Energy Consumption Rate vs Ice Harvest Rate



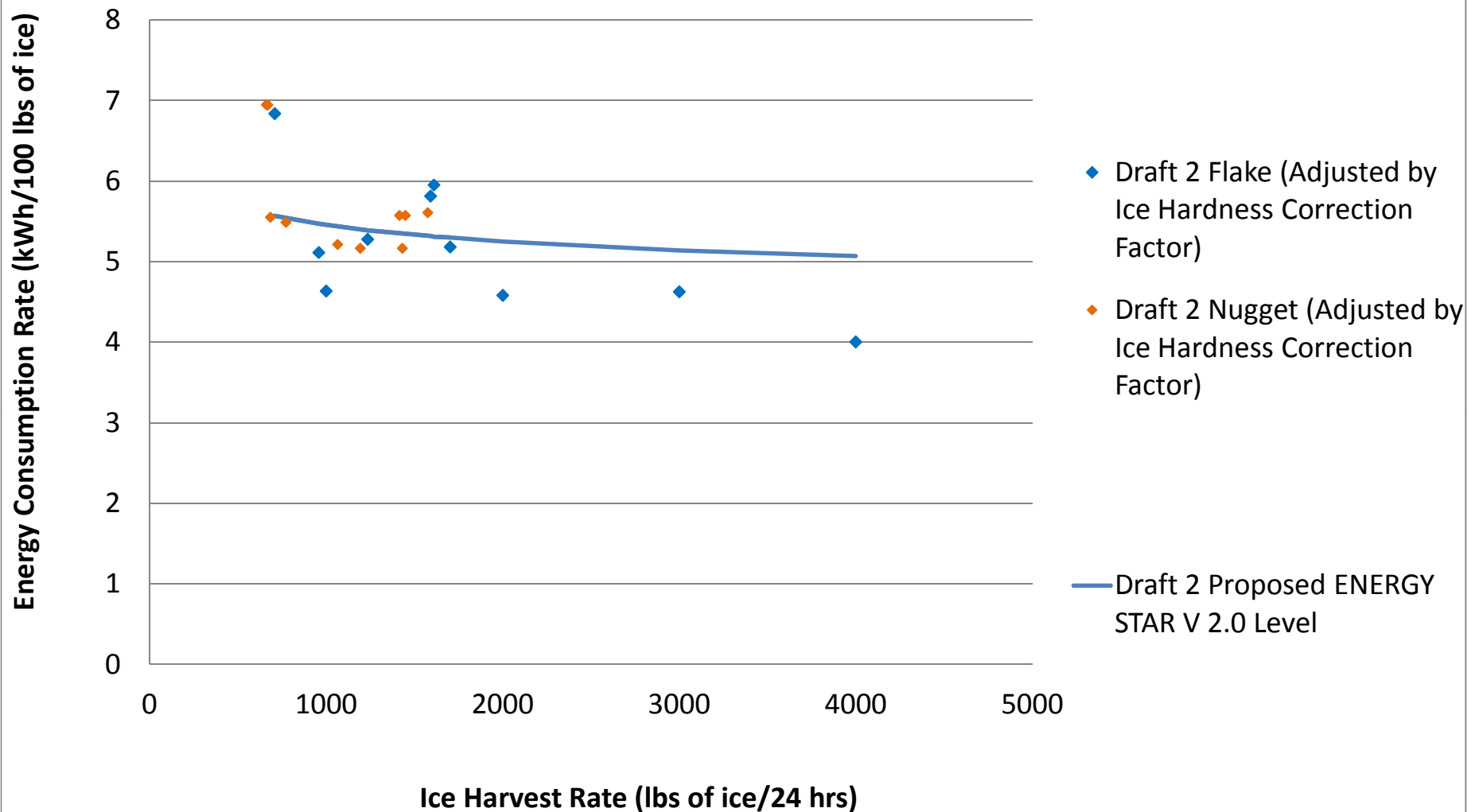
# Final Draft - SCU Batch Type Air-Cooled Automatic Commercial Ice Maker Energy Consumption Rate vs Ice Harvest Rate



**Draft 2 - IMH Continuous Type  
Air-Cooled Automatic Commercial Ice Maker  
Adjusted Energy Consumption Rate vs Ice Harvest Rate**



**Draft 2 - RCU Continuous Type  
Air-Cooled Automatic Commercial Ice Maker  
Adjusted Energy Consumption Rate vs Ice Harvest Rate**



**Final Draft - SCU Continuous Type  
Air-Cooled Automatic Commercial Ice Maker  
Adjusted Energy Consumption Rate vs Ice Harvest Rate**

