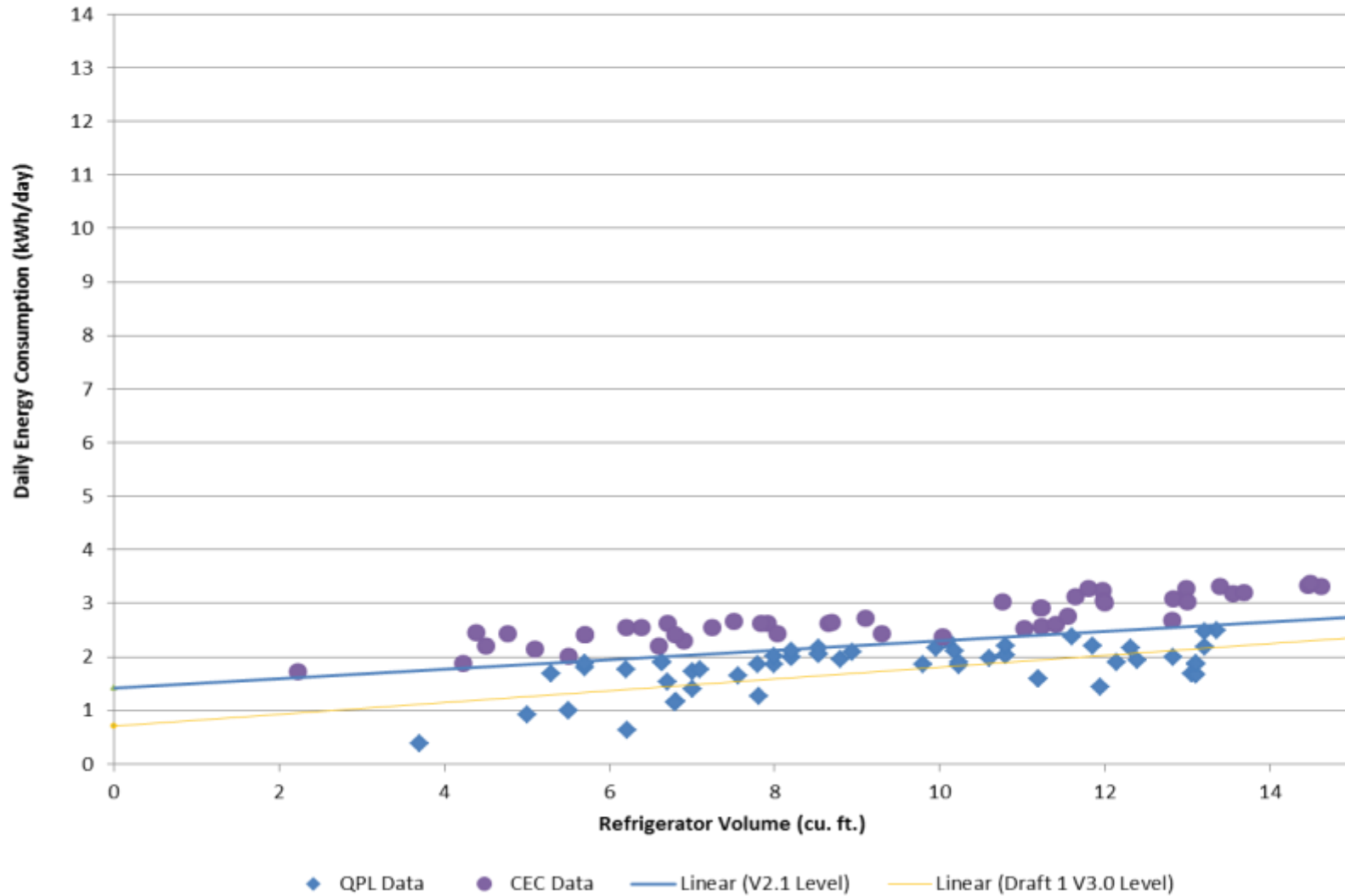


Commercial Refrigerators and Freezers Draft 1 Version 3.0

Proposed Draft 1 Qualification Criteria Data Plots – Vertical and Horizontal, Solid and Transparent Door Refrigerators

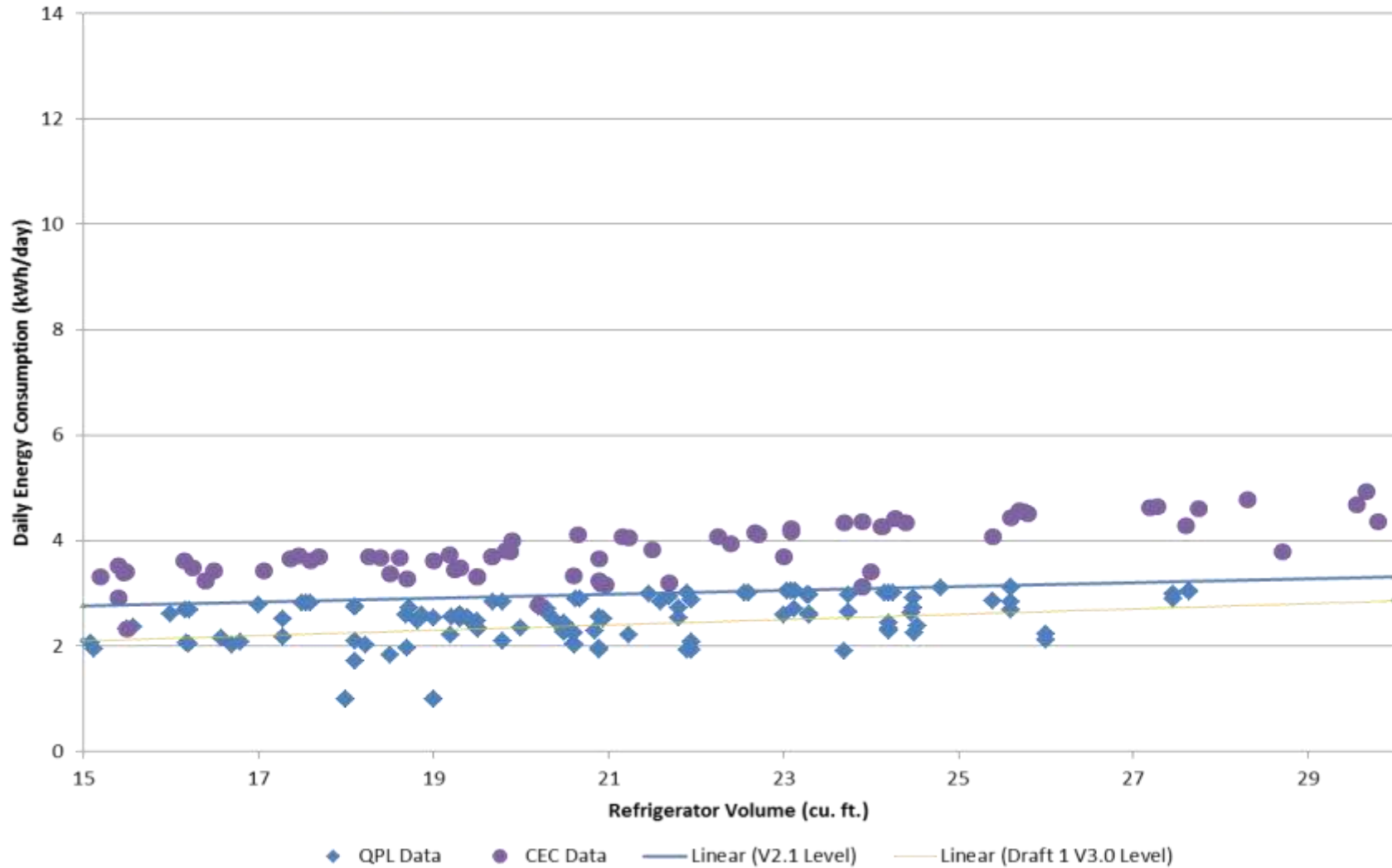
Number of Models Meeting Draft 1 V3.0 Levels: 24
Number of Manufacturers Meeting Draft 1 V3.0 Levels: 13

Refrigerators, Solid Door, $0 < V < 15$ cf



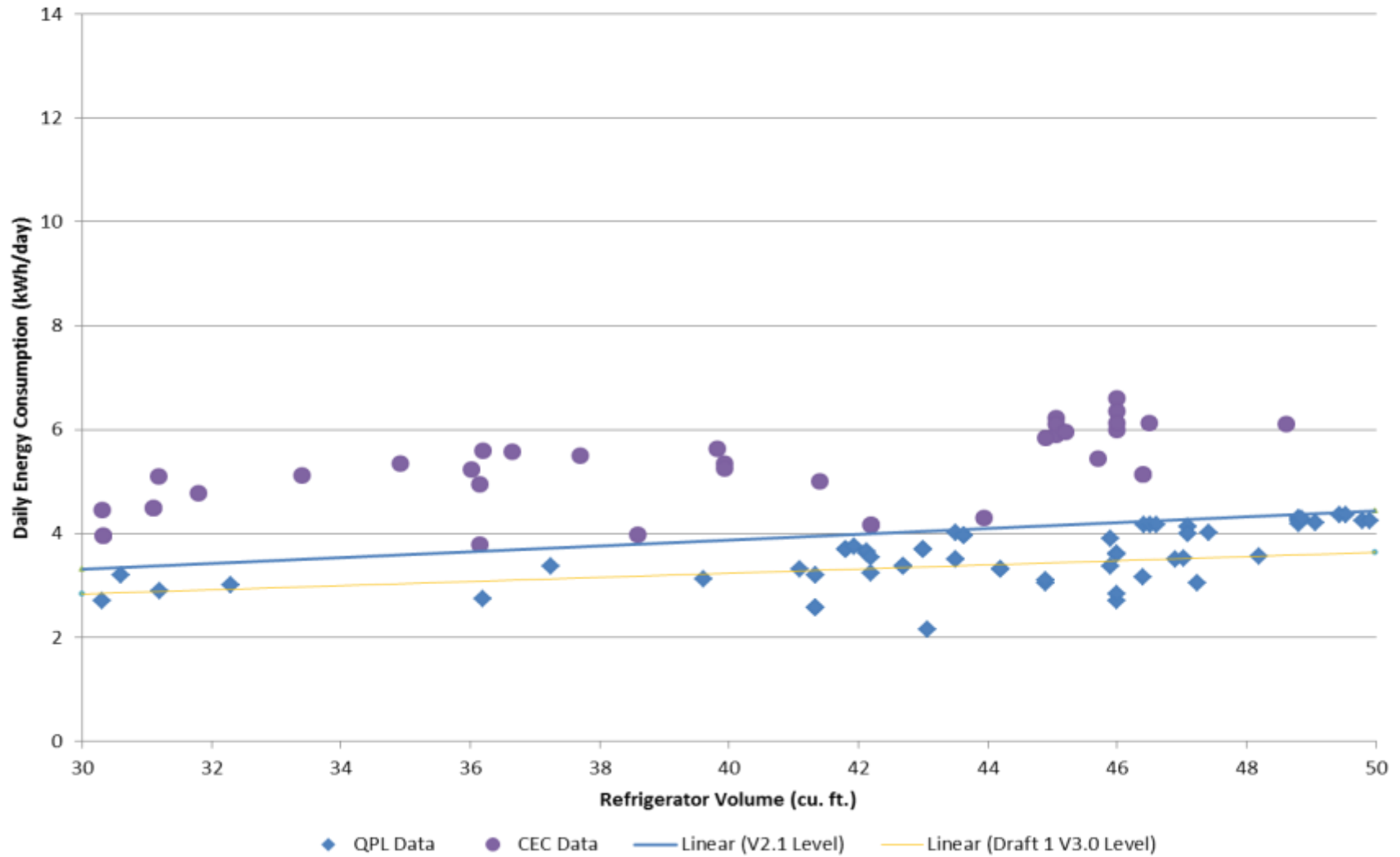
Number of Models Meeting Draft 1 V3.0 Levels: 55
Number of Manufacturers Meeting Draft 1 V3.0 Levels: 20

Refrigerators, Solid Door, $15 \leq V < 30$ cf



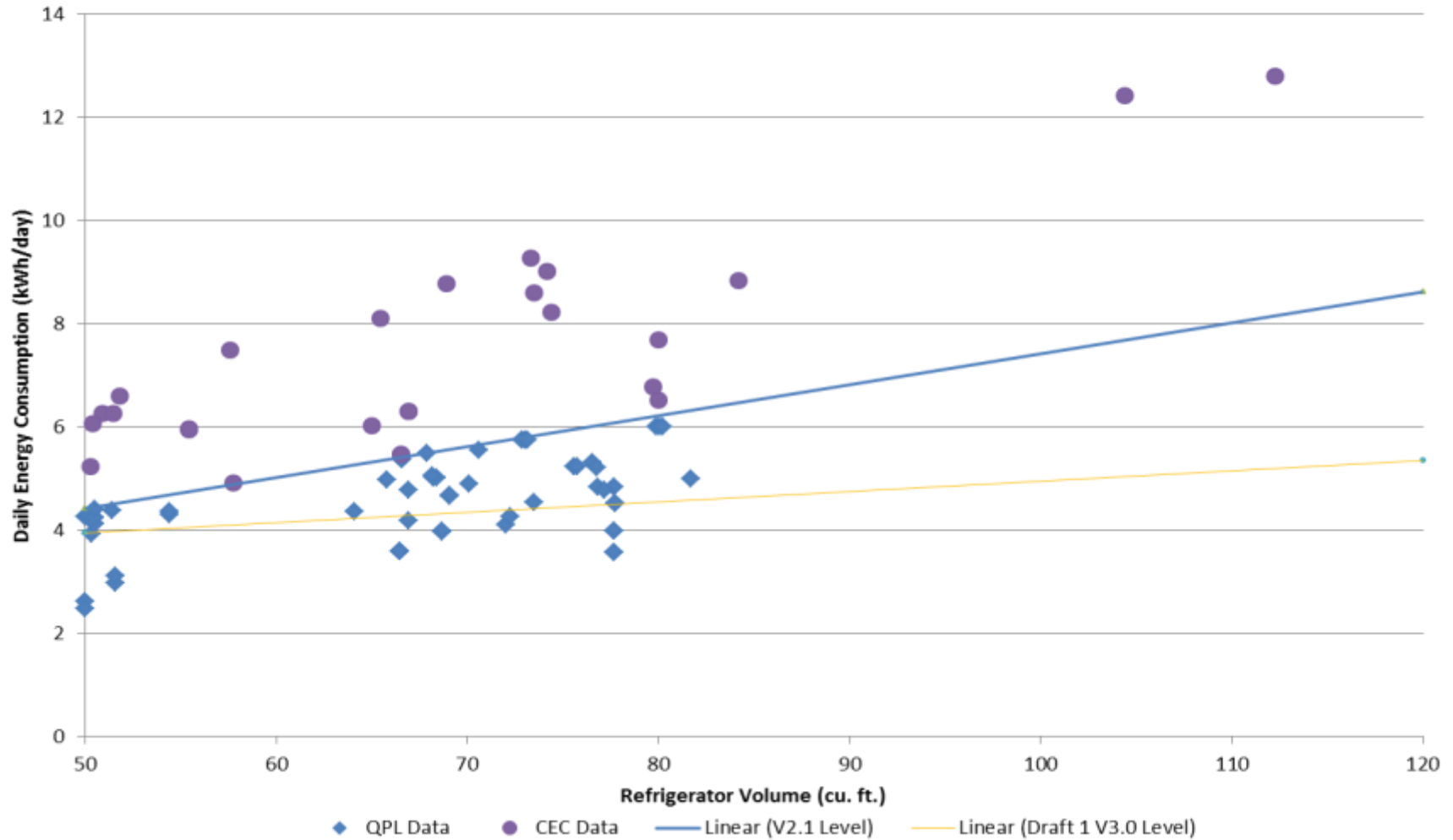
Number of Models Meeting Draft 1 V3.0 Levels: 27
Number of Manufacturers Meeting Draft 1 V3.0 Levels: 17

Refrigerators, Solid Door, $30 \leq V < 50$ cf



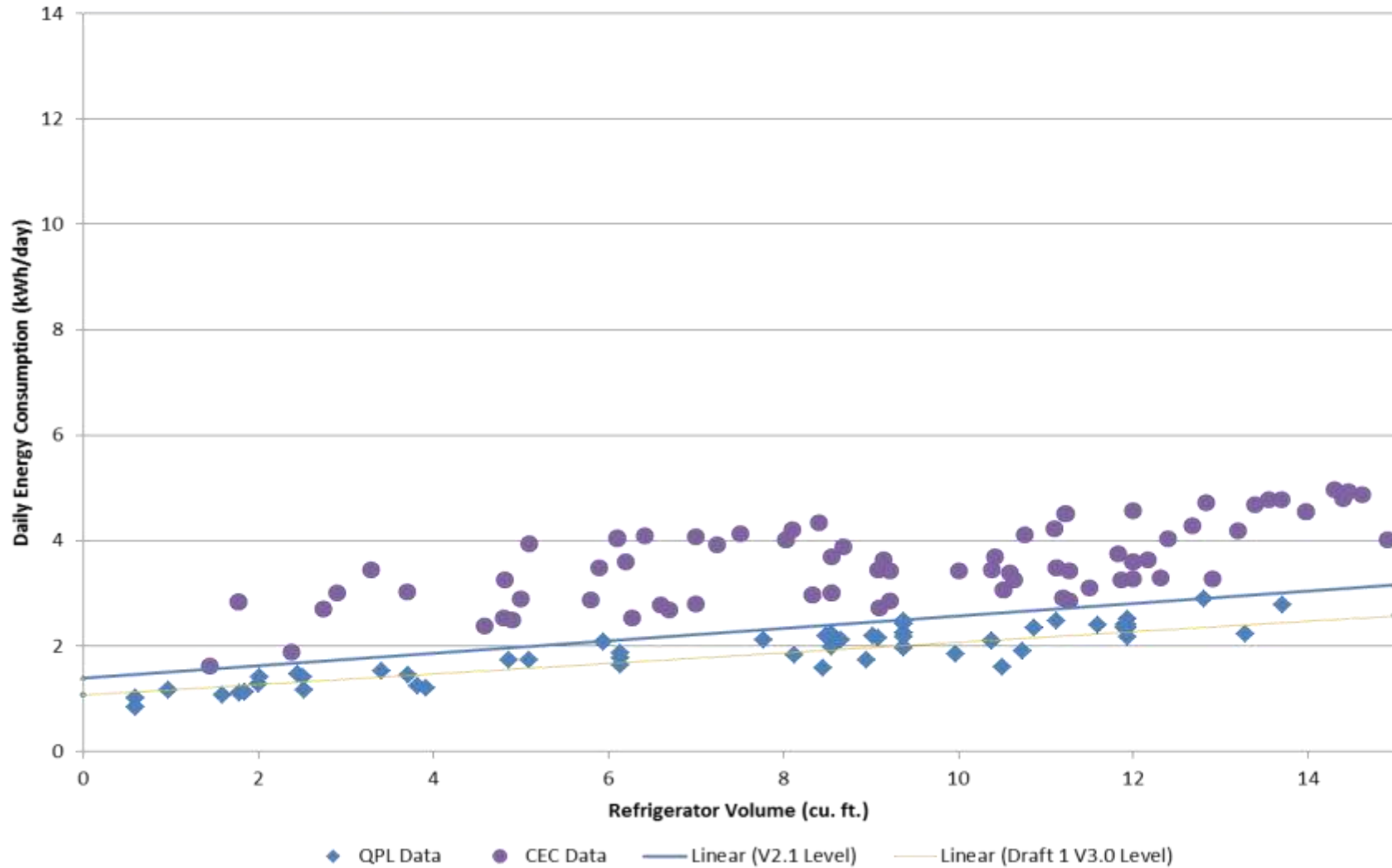
Number of Models Meeting Draft 1 V3.0 Levels: 18
Number of Manufacturers Meeting Draft 1 V3.0 Levels: 11

Refrigerators, Solid Door, $50 \text{ cf} \leq V$



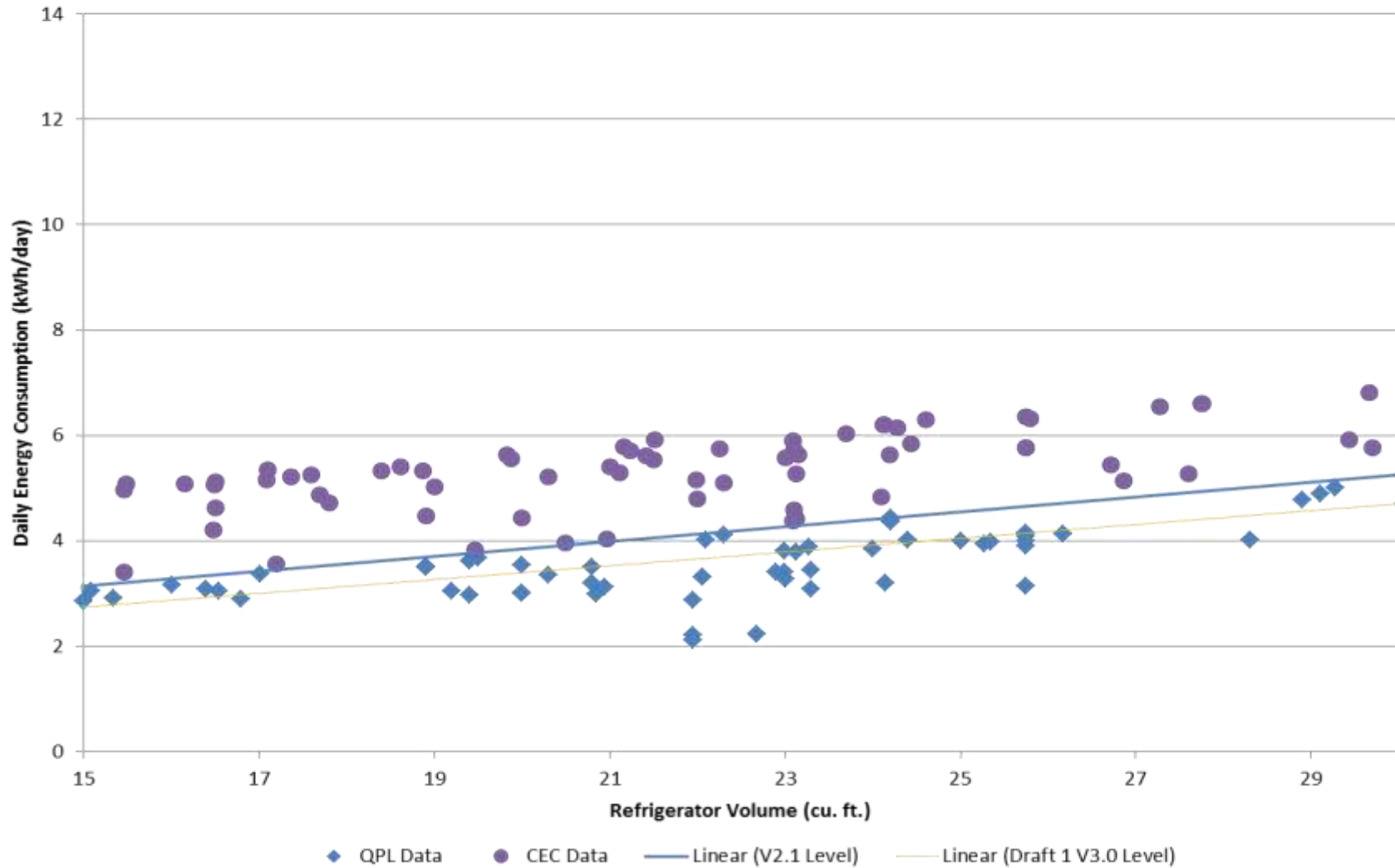
Number of Models Meeting Draft 1 V3.0 Levels: 44
Number of Manufacturers Meeting Draft 1 V3.0 Levels: 12

Refrigerators, Transparent Door, $0 < V < 15$ cf



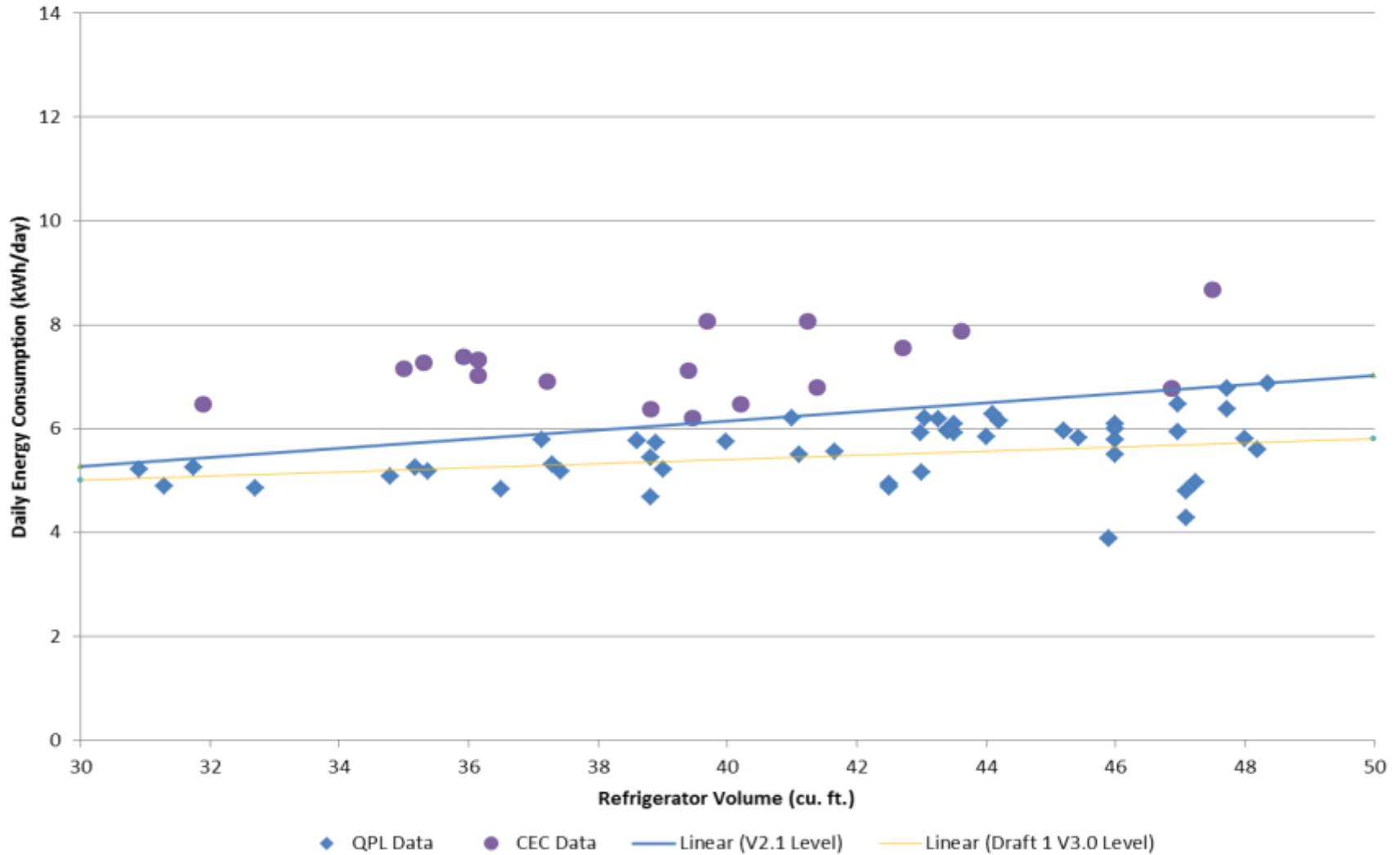
Number of Models Meeting Draft 1 V3.0 Levels: 34
Number of Manufacturers Meeting Draft 1 V3.0 Levels: 16

Refrigerators, Transparent Door, $15 \leq V < 30$ cf



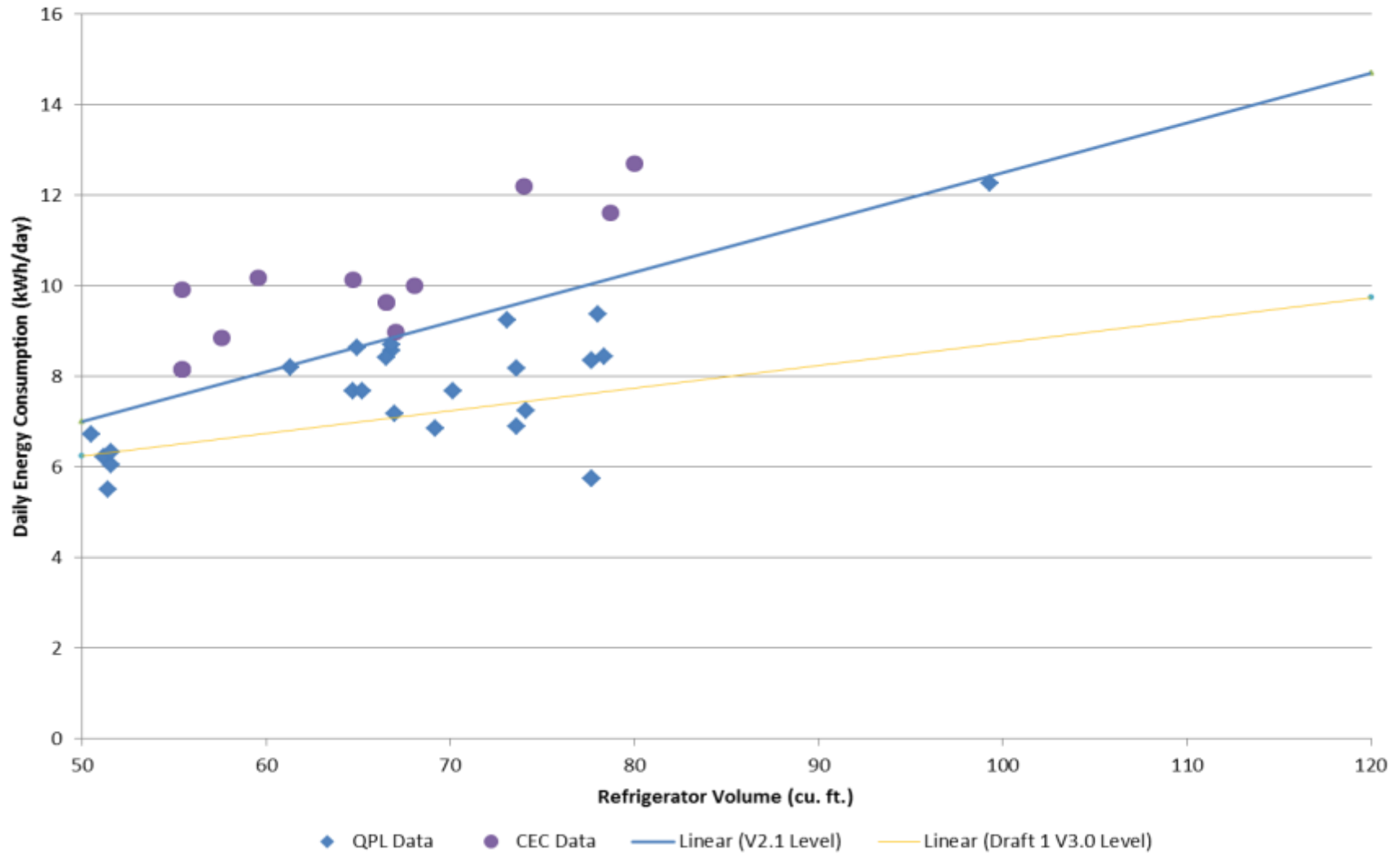
Number of Models Meeting Draft 1 V3.0 Levels: 20
Number of Manufacturers Meeting Draft 1 V3.0 Levels: 11

Refrigerators, Transparent Door, $30 \leq V < 50$ cf

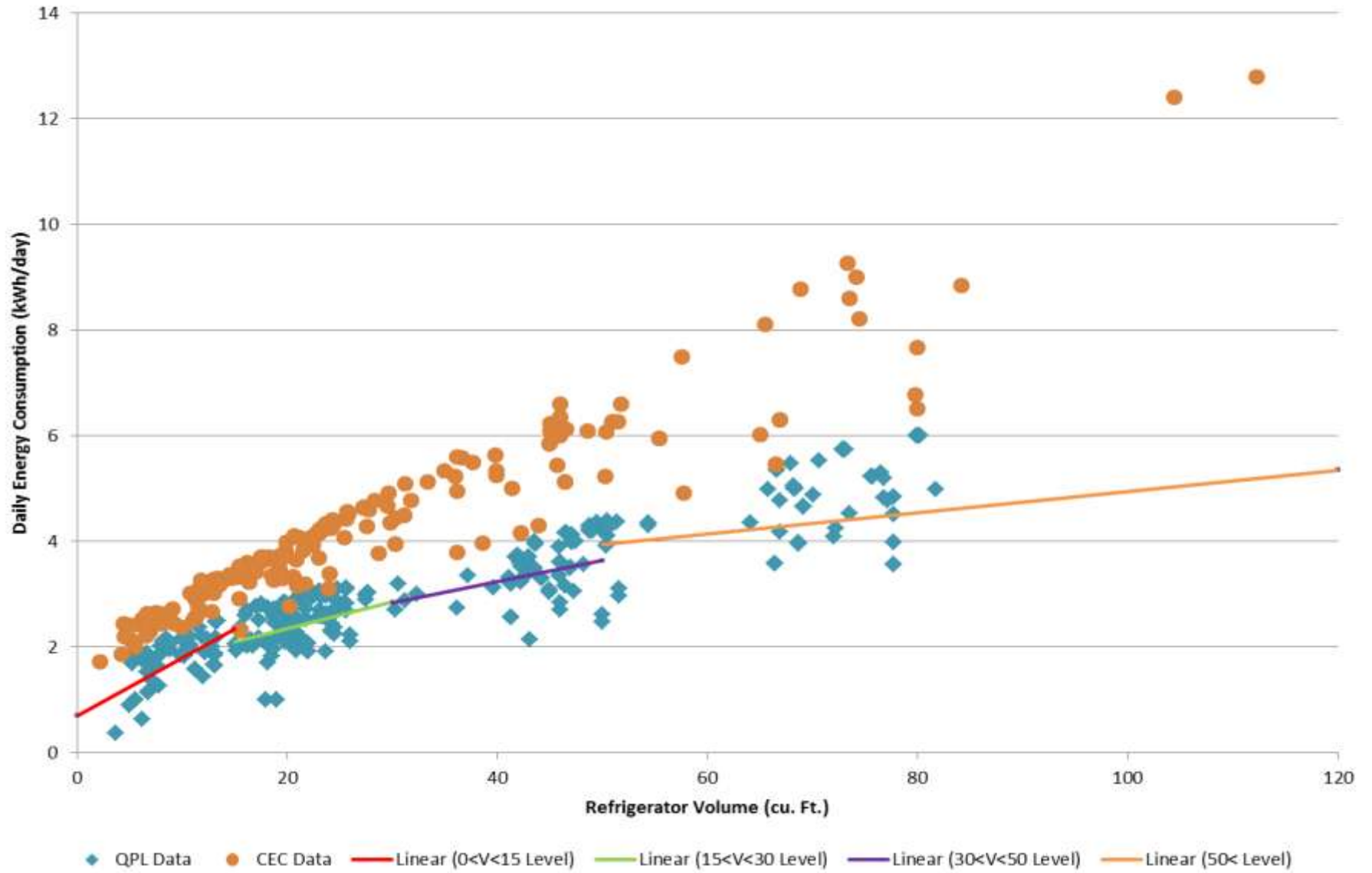


Number of Models Meeting Draft 1 V3.0 Levels: 9
Number of Manufacturers Meeting Draft 1 V3.0 Levels: 7

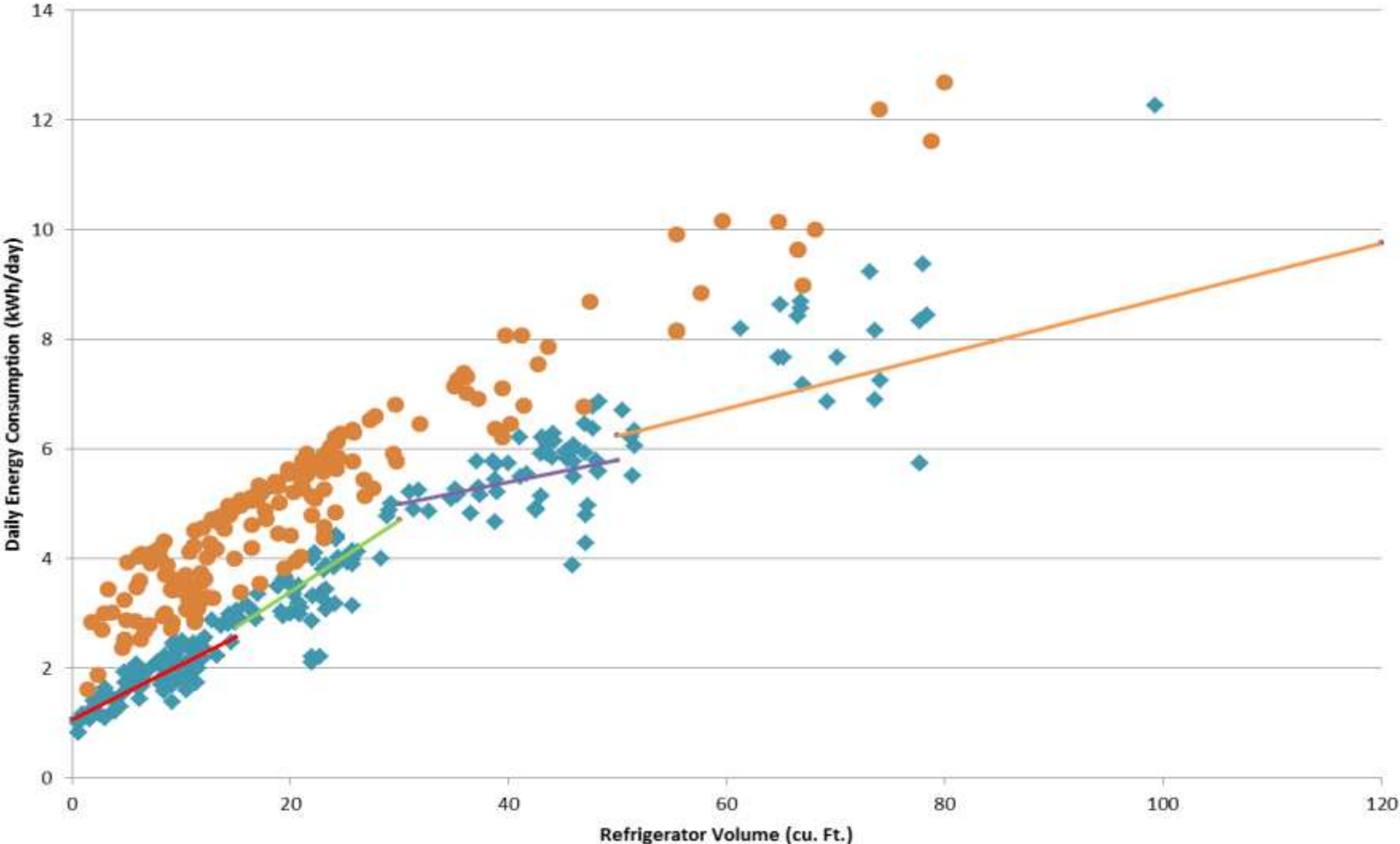
Refrigerators, Transparent Door, $50 \text{ cf} \leq V$



Refrigerator Levels, Vertical, Solid Door



Refrigerator Levels, Vertical, Transparent Door



◆ QPL Data ● CEC Data — Linear (0<V<15 Level) — Linear (15<V<30 Level) — Linear (30<V<50 Level) — Linear (50< Level)

Number of Models Meeting Draft 1 V3.0 Levels: 14
Number of Manufacturers Meeting Draft 1 V3.0 Levels: 3

Horizontal Refrigerator Level

