



# Next Generation Luminaires

## SSL Design Competition

# Engaging Specifiers

Ruth Taylor  
Pacific Northwest National Laboratory

2009 ENERGY STAR Lighting Partner Meeting  
March 19, 2009 - San Antonio, TX

# Background

- Lighting for Tomorrow (residential)
- ENERGY STAR (expanded to commercial)
- DOE Designer's Workshop
- MOU with IESNA & IALD
- Next Generation Luminaires (commercial)

# Designers Workshop

- Sponsored by DOE, March 2008
- Big issues discussed
  - Truth in advertising
  - Standards
  - Replacement, serviceability, modularity
  - Standard cut sheets, model specifications
  - Further engagement of design community

# NGL Partners

- IES
- IALD
- DOE



INTERNATIONAL ASSOCIATION OF LIGHTING DESIGNERS

**IALD**

**Illuminating**  
ENGINEERING SOCIETY



# NGL Competition Distinctives

- Inclusive rather than exclusive
- Independent testing of finalists
- Diverse set of judging experts
- DOE channels of promotion
  - Utility incentive programs
  - Demonstrations

# Requirements

- Market-ready luminaires & emerging products categories
- Market-ready requirements
  - Minimum requirements for efficacy & color quality for some categories
  - LM-79 photometry, LED & driver data sheets & 3 product samples required

# 2008 Judging Event



## *Judges*

Greg Ander  
Nancy Clanton  
Frank Florentine  
John Gebbie  
Stefan Graf  
Mike Grather  
Michael Hennes  
Ron Kurtz  
Samantha Lafleur  
Jeff McCullough  
Naomi Miller  
Avraham Mor  
Melanie Tayllor  
Charles Thompson

*Nov. 6-7, 2008*

Underwriters Laboratory, Raleigh, NC





# What was sent

- 188 Intents-to-submit (62 manufacturers)
- 68 products arrived at UL (29 manufacturers)





# Evaluation Criteria

## Market Ready

1. Color appearance
2. Color rendering
3. Appropriate illuminance
4. Appropriate luminance
5. Application efficacy
6. Aesthetic appearance & style
7. Serviceability & replacement

## Bonus Points

- Innovation
- No off-state power use
- Dark-sky friendly
- Adjustability/Flexibility
- Integrated system



# Judging Approach

- Organized by application
  - Market Ready
  - Emerging
  - Best in Class (discretionary)
- Product Evaluation
  - Installed and lighted
  - Table top
  - Documentation
- Process
  - Independent judgment
  - *Preliminary* scoring
  - Discussion and decision



# The Process



# What we saw

- Product emphasis
  - 30% linear LED (undercabinet, cove, display etc.)
  - 25% downlights
- Luminaire efficacy
- Maintenance issues
- Testing issues
- What we didn't see



- Emerging Category
  - 14 products judged
  - 5 recognized as 'noteworthy'



# **Beta Lighting**

## ***LED Linear Pendant***





# Ledion Lighting *TD26 Downlight*



# Winona Lighting *Subline*



# GO Lighting Technologies

## *GO FLL*



# **GO Lighting Technologies**

## ***GO R312N1E1***



- Market Ready Category
  - 48 products judged
  - 22 recognized for satisfying all basic criteria
  - 3 of these 22 awarded 'Best in Class'

# MP Lighting *LED72*





# Amerlux Lighting Solutions

## *Cylindrix II*



# Specialty Lighting Industries

## *1009-LED*



# Specialty Lighting Industries

## *1500-LED*





# Tech Lighting

## *LED Pendant*



# Gallium Lighting

## *GS6 Downlight*



# Philips Color Kinetics eW Downlight Powercore





# **Lightolier/Philips Calculite LED Downlight**



# Amerlux Lighting Solutions

## *Evoke 2.9*



# Cree LED Lighting *LR4*





# Cree LED Lighting *LR6*



# MP Lighting L161



# Philips Color Kinetics eW Cove Powercore



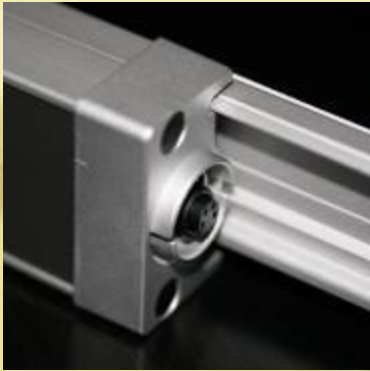


# **GE Lighting**

## ***Architectural Cove lighting***



# LED-Linear Xoolux



# Philips Color Kinetics *eW Profile Powercore*



# **Albeo Technologies**

## ***C-Series LED High Bay***





# Cree LED Lighting *LR24*





# Winona Lighting

## *Winscape LED16*



# Best in Class

- Winona Lighting – *STEP03*
- GE Lighting – *Immersion*
- Journée – *AZARA*

# Winona Lighting

## *STEP03*



# **GE Lighting** *Immersion*





# Journée Lighting **AZARA**





# Future Competitions

- Exterior installation of street lighting entries
- Standard product sheets with each entry
- Replacement/serviceability in entry requirements
- Discussions with manufacturers about true innovative designs
- Bench mark fixtures for each judging category
- Temperature measurement requirements to evaluate life claims
- Integration requirements
- Dimming installations for judging
- “End of Life” statements
- Decorative/hospitality category

# 2009 Competition

**2009 Competition launches at  
LightFair – May 2009**

**We look forward to seeing your  
products!**

**[www.nglfdc.org](http://www.nglfdc.org)**



# Questions?

Ruth Taylor  
[ruth.taylor@pnl.gov](mailto:ruth.taylor@pnl.gov)  
(509) 375-2389

