

# Evaluating Color Quality

March 31, 2016 (1:00 PM – 3:00 PM EDT)

The webinar will begin at 1:00 PM



The screenshot shows a GoToWebinar interface with several callout boxes:

- Left Callout:** "Use this button to expand or minimize your toolbar at any time." with an arrow pointing to the expand/collapse icon in the top-left toolbar.
- Bottom-Left Callout:** "If you are using your telephone:"
  - Select the "Use Telephone" button.
  - Dial in and enter your Access Code.
  - Enter your audio PIN and press #.with an arrow pointing to the "Use Telephone" radio button.
- Right Callout:** "If you are using the speakers on your computer:"
  - Select the "Use Mic & Speakers" radio button.
  - Unmute your desktop.
  - Click on Audio Setup if you're having any difficulty.with an arrow pointing to the "Use Mic & Speakers" radio button.

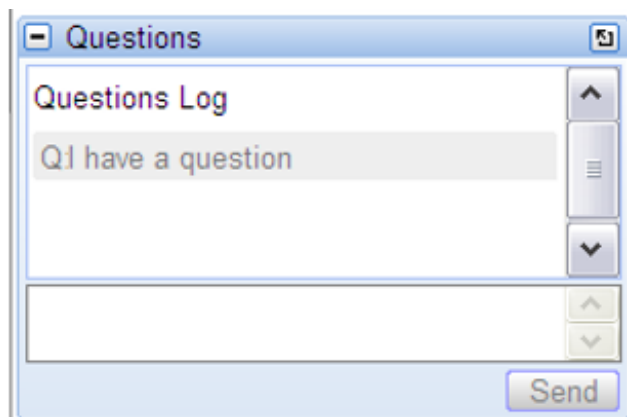
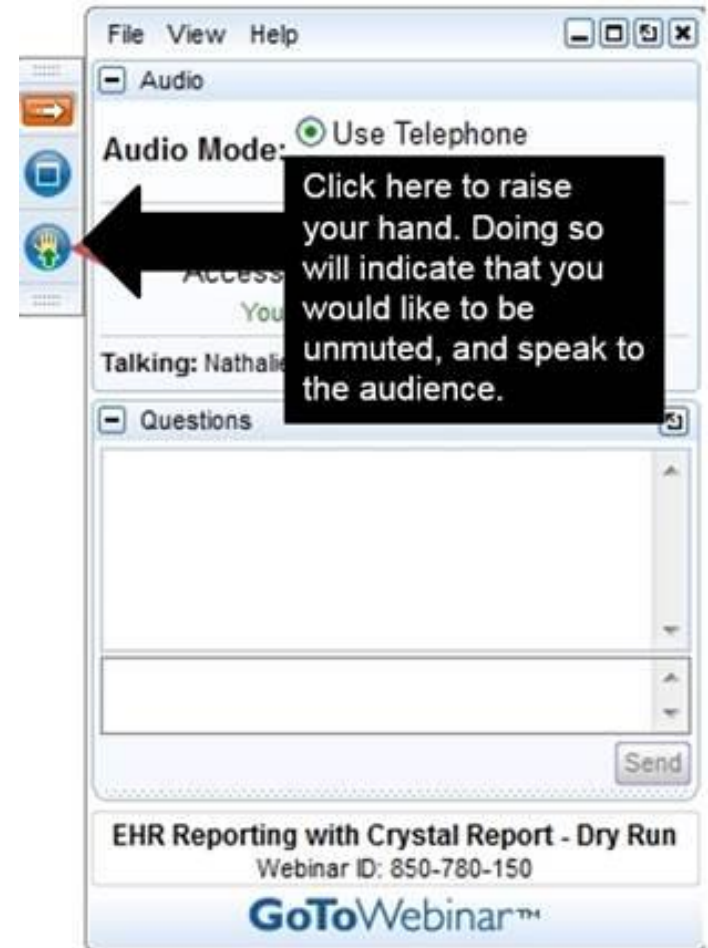
The interface also shows fields for "Dial:", "Access Code:", and "Audio PIN:", along with a "Questions Log" section containing the text "Q: I have a question".

Slides for this webinar are posted at

[www.energystar.gov](http://www.energystar.gov) (search "lighting webinars")

# Evaluating Color Quality

## Asking a Question





# Moderators

## **Taylor Jantz-Sell**

ENERGY STAR Lighting Program Manager

**U.S. Environmental Protection Agency**

## **Daniel Rogers**

ICF Lighting Technical Lead for ENERGY STAR Product Specification Development

**ICF International**



# Attendee Polls



# Introductions



**Jean Paul Freyssonier**

Senior Research Scientist

**Lighting Research Center**



**Dr. Michael Royer**

Lighting Engineer

**Pacific Northwest National Laboratory (PNNL)**



**Dr. Yoshi Ohno**

NIST Fellow, Sensor Science Division  
(President, International Commission on Illumination)

**National Institute of Standards and Technology (NIST)**



# Discussion

Slides for this webinar are posted at  
[www.energystar.gov](http://www.energystar.gov) (search “lighting webinars”)

## Follow-Up Webinar: Evaluating Color Quality

July 28, 2016 from 1:00PM - 3:00PM EDT

This follow-up webinar will cover the practical applications of the research and recommendations from experts. Discussion will center on what considerations, if any, could be made for a wide range of stakeholders and programs participating in the advancement of energy-efficient lighting.



**Dr. Kevin Houser**

Professor of Architectural Engineering  
**The Pennsylvania State University**



**Dr. Mark Rea**

Director  
**Lighting Research Center**



