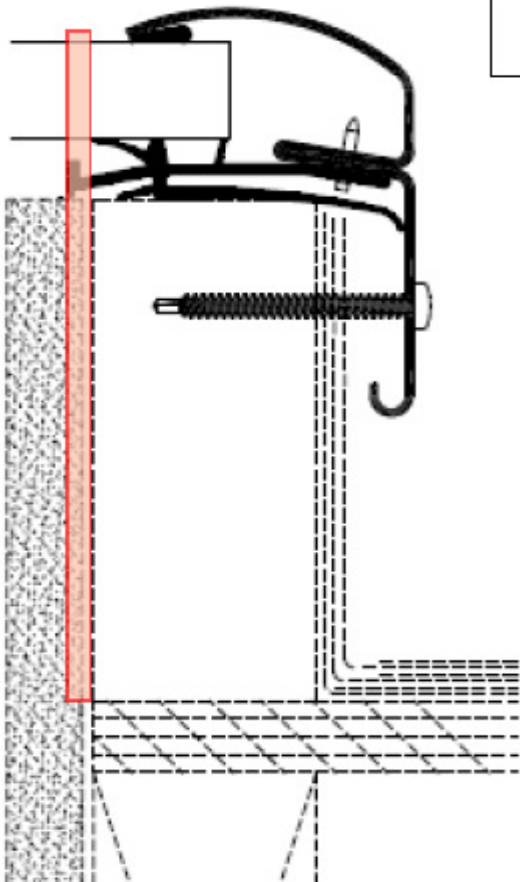


Product Line Name	FCM	FS	VS/VSE/VSS	VCM/VCE/VCS
Product Sub-Type	Fixed Curb Mount	Fixed Deck Mount	Venting Deck Mount	Venting Curb Mount
Center of Glass U-Factor	0.349			
Center of Glass SHGC	0.274 (consistent with Cardinal literature)			
Center of Glass VT	0.648			
Whole Product U-Factor	0.490	0.445	0.430	0.534
Whole Product SHGC	0.271	0.260	0.229	0.238
Whole Product VT	0.638	0.611	0.537	0.556

Summary conclusion: Reduction in optical performance (SHGC and VT) from COG to Whole Product for skylights is proportional to the reduction in vision area resulting from frame encroachment. The very narrow encroachment of the FCM is a special case that is not typical for products that lie completely within the opening, such as windows in a punched wall opening. The FS also has a narrow frame portion overhanging the rough opening, relative to typical windows of a similar size and strength.

Note: Even though the typical FCM installation would have finish material against the inside of the curb, further closing up the vision area, NFRC procedures do not permit this element to be included.

Fixed Curb Mount



Fixed Deck Mount

