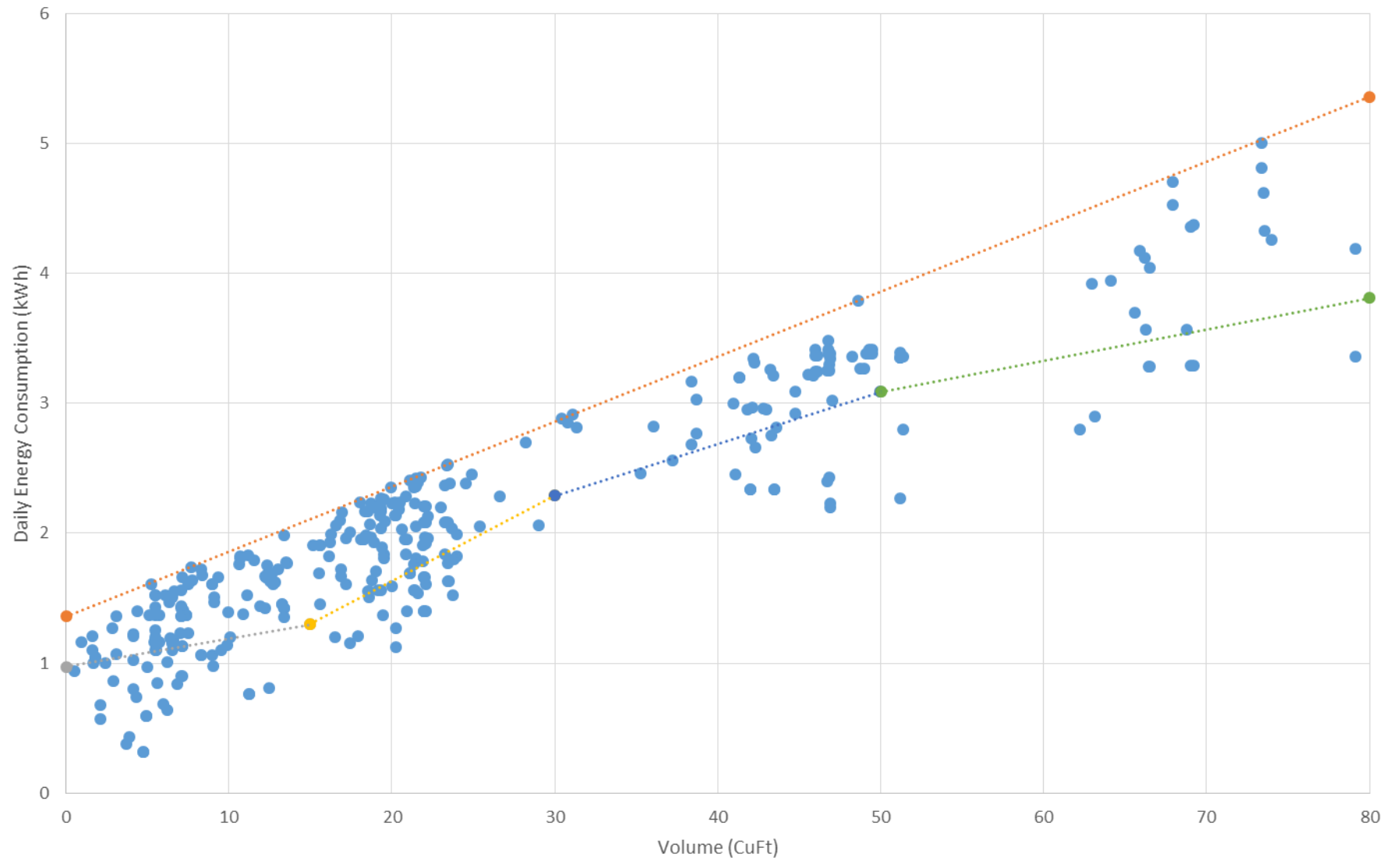


Proposed ENERGY STAR Draft 2 Version 4.0 Commercial
Refrigerators and Freezers Specification Maximum Daily
Energy Consumption (MDEC) Performance Levels

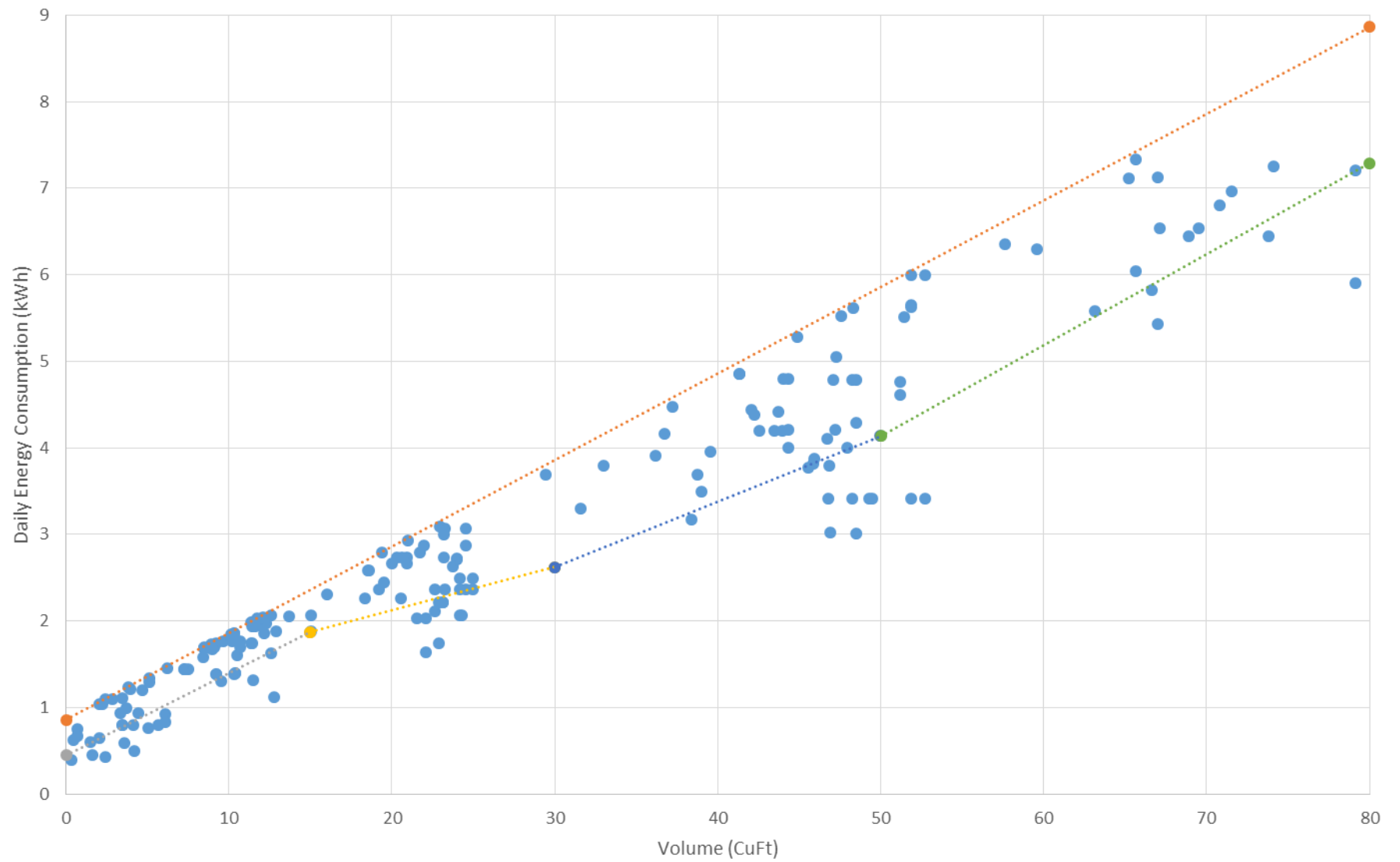
June 7, 2016

VCS.SC.M, Levels



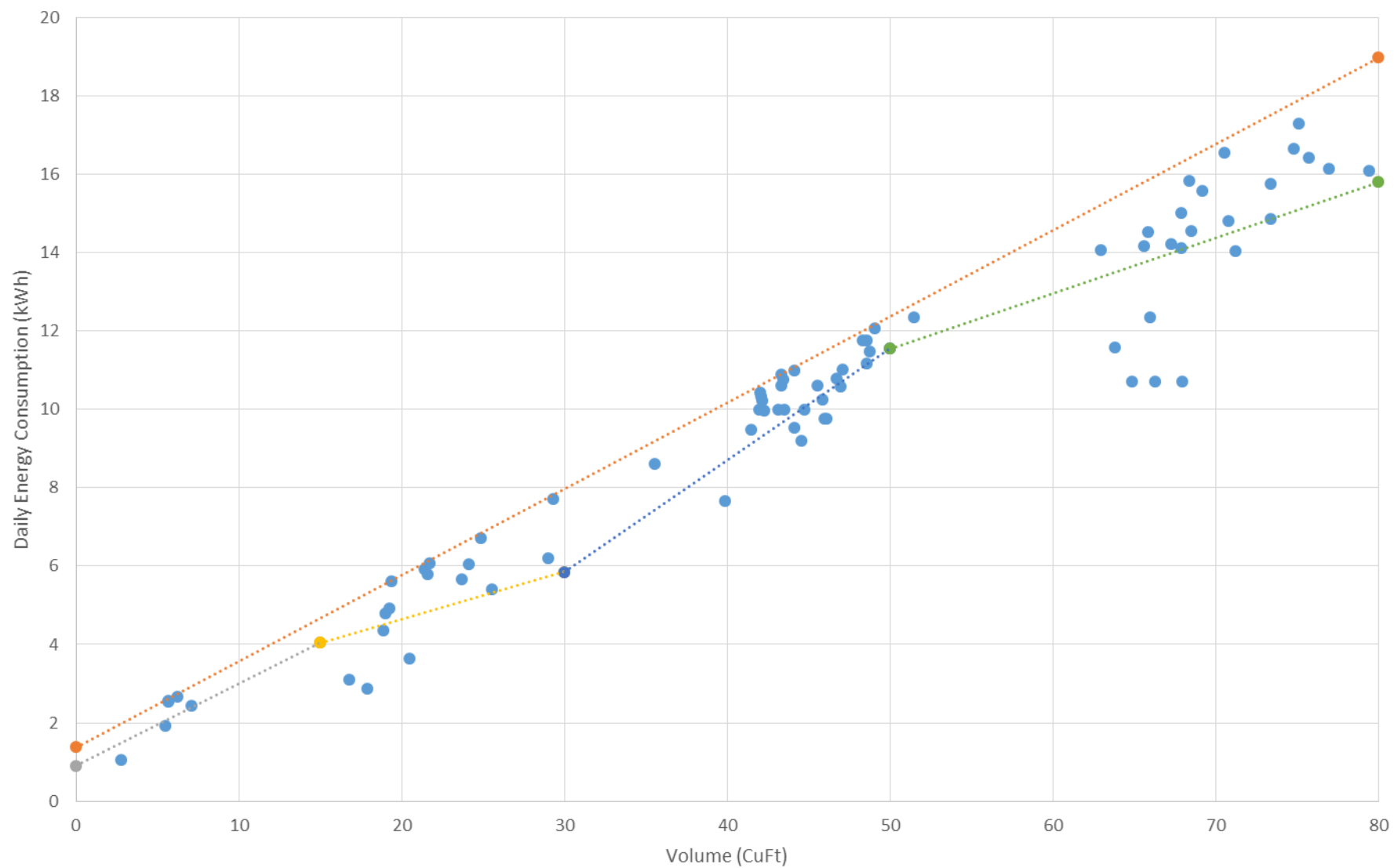
● Performance Data Linear (DOE 2017 Level) Linear (ES Level, 0-15)
..... Linear (ES Level, 15-30) Linear (ES Level, 30-50) Linear (ES Level, 50+)

VCT.SC.M, Levels



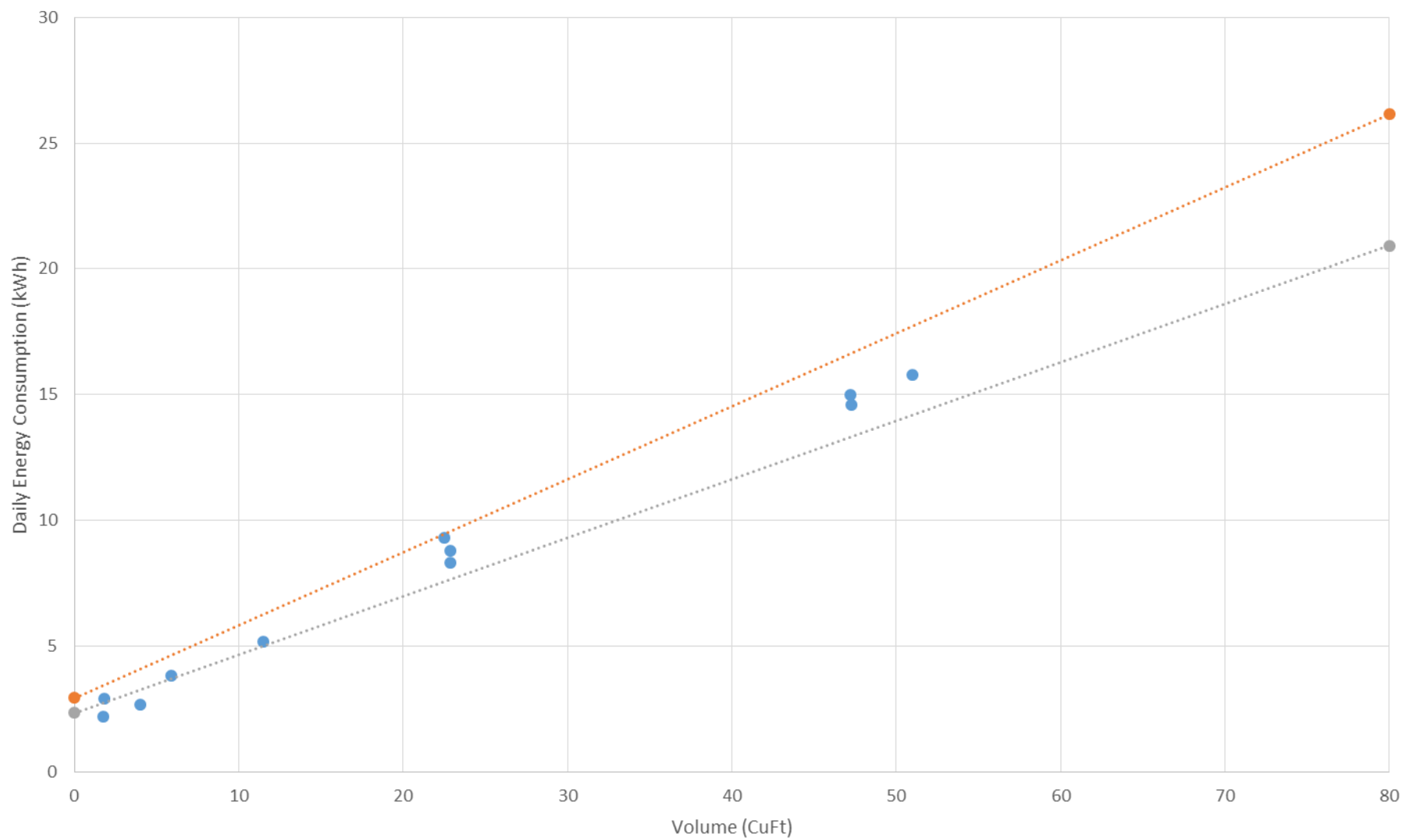
● Performance Data Linear (DOE 2017 Level) Linear (ES Level, 0-15)
..... Linear (ES Level, 15-30) Linear (ES Level, 30-50) Linear (ES Level, 50+)

VCS.SC.L, Levels



● Performance Data -.- Linear (DOE 2017 Level) -.- Linear (ES Level, 0-15)
-.- Linear (ES Level, 15-30) -.- Linear (ES Level, 30-50) -.- Linear (ES Level, 50+)

VCT.SC.L, Levels



Performance Data

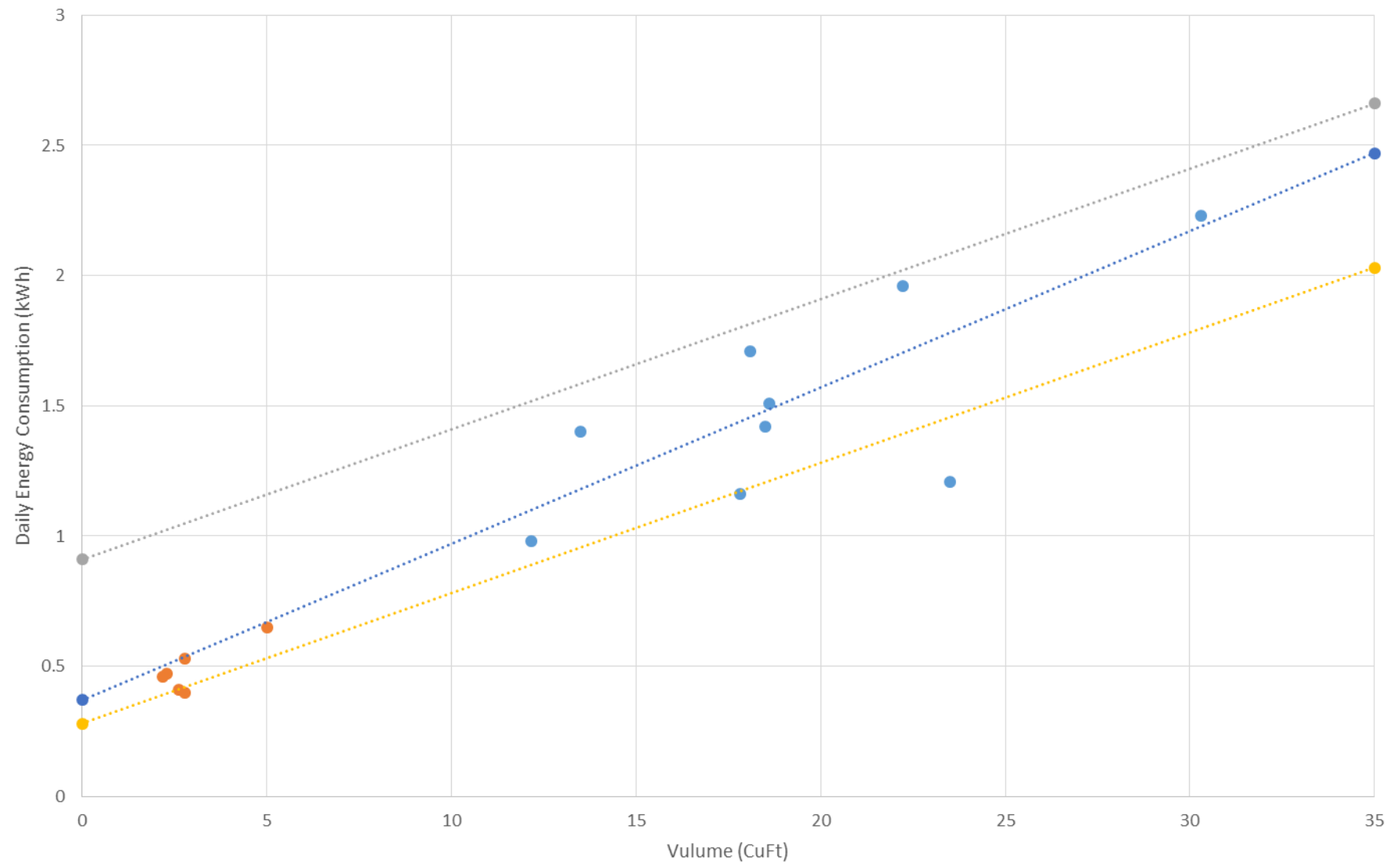


Linear (DOE 2017 Level)



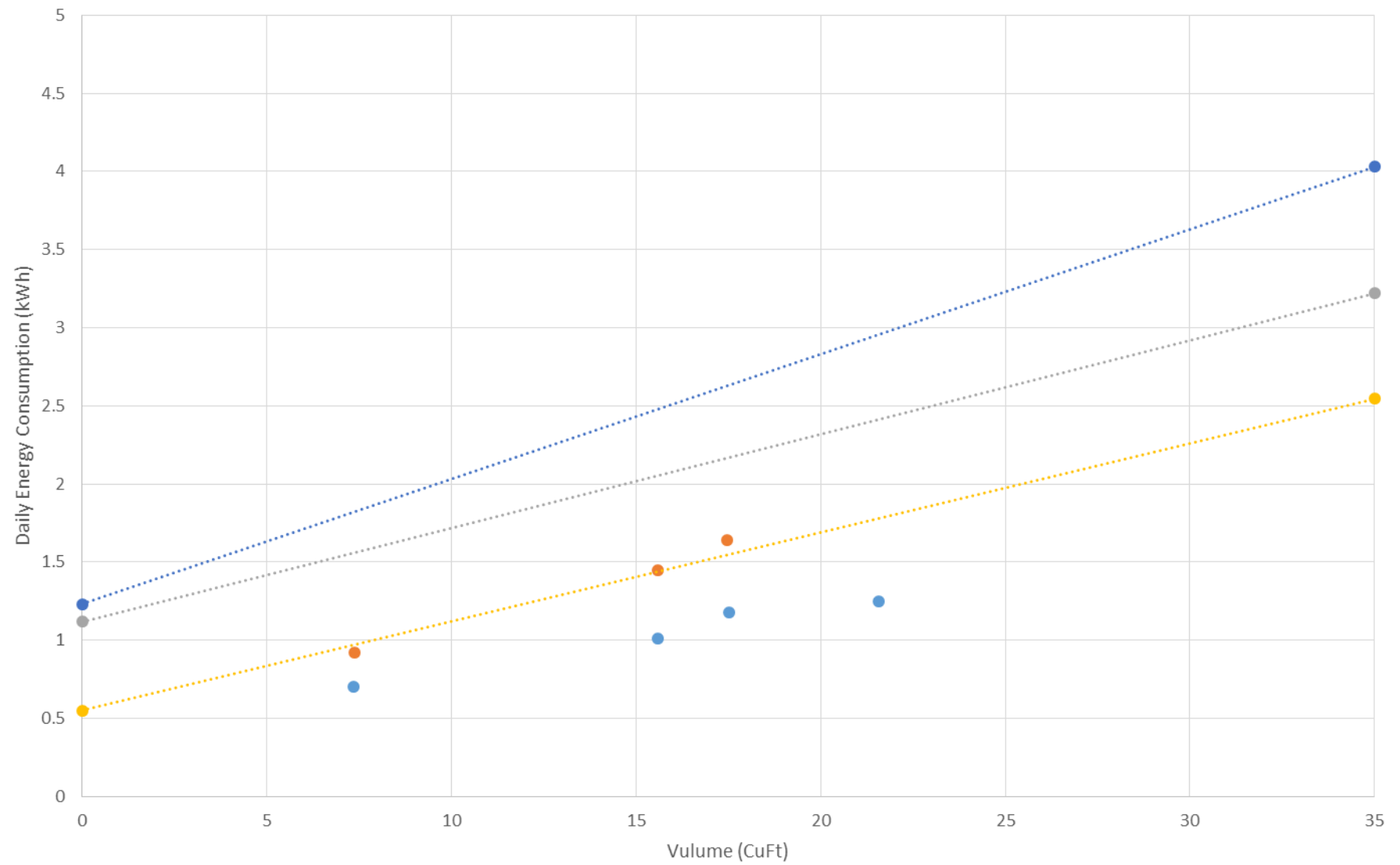
Linear (ES Level)

HCS/T.SC.M, Level



- HCS.SC.M Performance Data
- HCT.SC.M Performance Data
- Linear (DOE 2017 HCS.SC.M Level)
- Linear (DOE 2017 HCT.SC.M Level)
- Linear (ENERGY STAR Draft 1 Version 4.0 Level)

HCS/T.SC.L, Level



● HCS.SC.L Performance Data
..... Linear (DOE 2017 HCT.SC.L Level)

● HCT.SC.L Performance Data
..... Linear (ENERGY STAR Draft 1 Version 4.0 Level)

..... Linear (DOE 2017 HCS.SC.L Level)